



HEATING & VENTILATION

AIRMASTER HEATING & VENTILATION

CED has long been established as one of the UK's leading suppliers to the electrical wholesale industry as well as supporting unrivaled levels of stock and service. Our first product ever sold was a fan and a small selection of fans formed the basis of our founding range of products. It has been over 25 years since then and our product selection has increased to over 5,000 lines. However cooling, heating, ventilation and hygiene have always remained a vital part of CED's core offering. Now under the Airmaster brand we are proud to have the widest range to date and we aim to continue to provide the best in informational and marketing materials to support the latest fans, heaters, extractor fans and hand dryers. The high quality of Airmaster products is ensured with UKCA, CE, TÜV and GS approvals, adherence to all relevant BS EN Standards and, where relevant, products are Lot 20 or RoHS compliant.



IP20



Dimensions (mm)
345 x 251 x 473

General Features

- EN60335-2
- 220-240v/50Hz
- GS approval (selling successfully over 20 years)
- Oscillating mechanism in the centre of the motor
- Oscillating movement has whisper quiet operation to circulate air evenly & efficiently
- Aerodynamic blade for more powerful air delivery
- Durable safety approved grill & non-scratch rubber feet
- Oscillating head with slipping clutch mechanism for safety
- Modern stylish design and colour coordinated to suit most décors
- White colour body
- Plastic blade
- 1.7 Meter cable length
- Fitted with 3 Amp fused BSI approved 3 pin plug
- Easy to assemble with locking screws
- User friendly instructions

Code: STF12D

- 12" Desk Fan - 3 Speed
- 40W - 220-240v/50Hz
- Oscillation and tilt function
- Mesh grille with copper motor
- Cable: 2 Core 0.75mm
- Rotation speed: 975rpm (Min) - 1156rpm (med) - 1311rpm (max)
- 4 Colour box 1pc + master carton 4pcs

31.59(cbm)

52.91(dB)

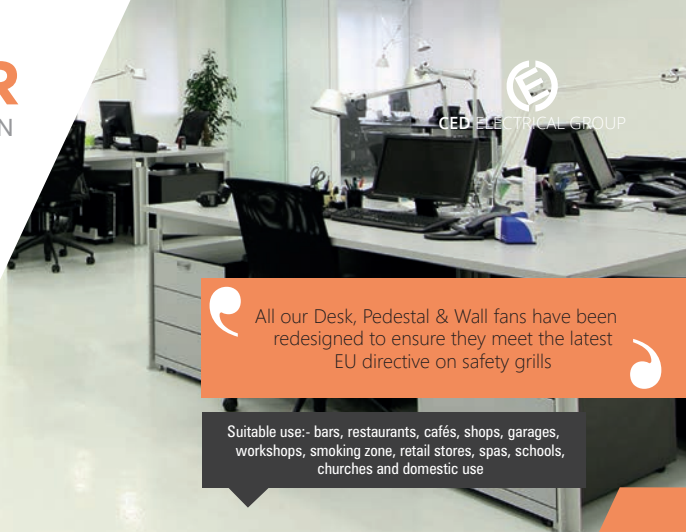
152(mA)

Class II

★★★ TOP SELLING

Minimum / Box quantity: 1/5

Minimum order quantity: 1



All our Desk, Pedestal & Wall fans have been redesigned to ensure they meet the latest EU directive on safety grills

Suitable use: bars, restaurants, cafés, shops, garages, workshops, smoking zone, retail stores, spas, schools, churches and domestic use

FANS

Desk Fans 2 Speed & 3 Speed



n/a
UKCA CE TÜV GS
Dimensions (mm)
670 x 670 x 1220



- Code: STF16D
16" Desk Fan - 3 Speed
- 45W - 220-240V/50Hz
 - Mesh grille with copper motor
 - Cable: 2 Core 0.75mm
 - Rotation speed: 900rpm (min) - 1100rpm (med) - 1250rpm (max)
 - 4 Colour box 1pc + outer carton 2pcs

| |
|------------|
| 36.13(cbm) |
| 54.91(dB) |
| 160(mA) |
| Class II |

★★★ TOP SELLING

Minimum / Box quantity: 1/4
Minimum order quantity: 1



IP20
UKCA CE TÜV GS
Dimensions (mm)
284 x 210 x 360



- Code: STF9D
9" Desk Fan - 3 Speed
- 30W - 220-240v/50Hz
 - Mesh grill with copper motor
 - Cable: 2 Core 0.75mm
 - Rotation speed: 1750rpm (min) - 2108rpm (max)
 - 4 Colour box 1 pc + outer carton 6 pcs

| |
|-----------|
| 15(cbm) |
| 52.26(dB) |
| 149(mA) |
| Class II |

Minimum / Box quantity: 1/6
Minimum order quantity: 1



UKCA CE TÜV GS
Dimensions (mm)
201 x 195 x 302



- Code: SCF6
6" Clip-On Fan - 2 Speed
- 23W - 220-240v/50Hz
 - Line plastic grille with copper motor
 - 4 colour box 1pc + outer carton Cable: 2 core 0.75mm
 - Rotation speed: 2250rpm (min) - 2000rpm (max)
 - 4 colour box 1pc + outer carton 6pcs

| |
|----------|
| 7.5(cbm) |
| 45(dB) |
| 160(mA) |
| Class II |

Minimum / Box quantity: 1/6
Minimum order quantity: 1

FANS

Pedestal / Tower & Wall Fans 3 Speed



IP20



Dimensions (mm)
670 x 670 x 1220 - Height range: 103-122cm

Code: SSF16D

16" Pedestal Fan - 3 Speed

- 45W - 220-240V/50Hz
- Mesh grille with copper motor
- Longer length cross shaped base for safety
- Cable: 2 Core 0.75mm
- Rotation speed: 900rpm (min) - 1100rpm (med) - 1250rpm (max)
- 4 Colour box 1pc + outer carton 2pcs

36.13(cbm)

54.91(dB)

160(mA)

Class II

Minimum / Box quantity: 1/3

Minimum order quantity: 1



IP20



Dimensions (mm)
240 x 240 x 762

Code: STF2

Tower Fan with Timer - 3 Speed

- 45W-50W - 220-240V/50Hz
- Timer up to 2 hours in 10min intervals
- Oscillation 85° degrees
- Cable: 2 Core 0.75mm
- Rotation speed: 1150rpm (min) - 1250rpm (med) - 1380rpm (max)
- 4 Colour box 1pc + master carton 2pcs

11(cfm)

54.9(dB)

200(mA)

Class II

Minimum / Box quantity: 1/4

Minimum order quantity: 1



IP20



Dimensions (mm)
450 x 356 x 560 - Height 20" (approx)

Code: SWF16

Wall Mounted Fan - 3 Speed

- 50W - 220-240V/50Hz
- Pull-Cord / Oscillation 60° degrees
- 3 Core cable 0.75mm
- Fits on the wall with metal brackets (supplied)
- Rotation speed: 1150rpm (min) - 1250rpm (med) - 1380rpm (max)
- 4 Colour box 1pc + outer carton 2pcs

31.59(cbm)

54.9(dB)

200(mA)

Class I

Minimum / Box quantity: 1/3

Minimum order quantity: 1



IP20



Dimensions (mm)
550 x 200 x 545

Code: HVF18

18" High Velocity Fan Floor standing - 3 Speed

- 140W - 220-240V/50Hz
- Incorporates a 51cm spiral Chromed grill with (3 section)
- Aluminium blades and tilt adjustment function for flexible use
- High velocity motor (copper wound) for maximum air circulation with precisely balanced blades to achieve lower operating noise
- Rotation speed: 950rpm (min) 1100rpm (med) 1250rpm (max)
- Built-in thermal fuse protection for motor
- Cable: Black 3x0.75mm², H05W-F VDE 1.8Mtr

31.59(cbm)

54.9(dB)

200(mA)

Class II

Minimum / Box quantity: 2

Minimum order quantity: 1



FANS

Chrome Antique Desk & Pedestal Fans - 3 Speed

Code: SSAF16CHR

16" Antique Pedestal Fan Chrome - 3 Speed

- 50W - 220-240v/50Hz
- Solid construction for high performance and durability
- Classical and elegant with 33.5cm spiral Chromed grill and 4 section Aluminium blade and oscillation function
- Rotation speed: 950rpm (min) 1100rpm (med) 1250rpm (max)
- Built in thermal fuse protection for the motor
- Pure copper wire motor
- Cable: Black 3x0.75mm², H05W-F VDE 1.8Mtr
- UKCA, CE, GS, CB, RoHS

Class I

Minimum / Box quantity: 1

Minimum order quantity: 1



Dimensions (mm)

445 x 395 x 1250 - Height 1.25M Range: 103-125cm

Code: SAF12CHR

12" Antique Desk Fan Chrome - 3 Speed

- 35W - 220-240v/50Hz
- Solid construction for high performance and durability
- Classical and elegant with 33.5cm spiral Chromed grill and 4 section Aluminium blades
- Built-in thermal fuse protection for the motor
- Pure copper wire motor
- Cable: Black 3x0.75mm², H05W-F VDE 1.8Mtr
- UKCA, CE, GS, CB, RoHS REACH approval
- Class I

Class I

Minimum / Box quantity: 1/4

Minimum order quantity: 1



Dimensions (mm)

335 x 265 x 410



FANS

Table & Wall Fans 3 Speed



IP20

UK CE RoHS

Dimensions (mm)
270 x 210 x 370

Code: TF9N

9" 22W 2 Speed Table Fan (White)

- 22W - 220~240v/50Hz
- Oscillation & Tilt function with 2 core 0.5mm cable.
- 4 colour box 1pc + master carton 4pcs
- Rotation speed: 2200rpm (max)
- Air Volume/Velocity: 3.8m/s
- Noise level: 39.5(dB)

22W

3.8(m/s)

39.5(dB)

Class II

Minimum / Box quantity: 1

Minimum order quantity: 1



IP20

UK CE RoHS

Dimensions (mm)
340 x 235 x 490

Code: TF12N

12" 35W 3 Speed Table Fan (White)

- 35W - 220~240v/50Hz
- Oscillation & Tilt function with 2 core 0.5mm cable.
- 4 colour box 1pc + master carton 4pcs
- Rotation speed: 1300rpm (max)
- Air Volume/Velocity: 5m/s
- Noise level: 40(dB)

35W

5(m/s)

40(dB)

Class II

Minimum / Box quantity: 1

Minimum order quantity: 1



IP20

UK CE RoHS

Dimensions (mm)
430 x 260 x 540

Code: TF16N

16" 45W 3 Speed Table Fan (White)

- 45W - 220~240v/50Hz
- Oscillation & Tilt function with 2 core 0.5mm cable.
- 4 colour box 1pc + master carton 4pcs
- Rotation speed: 1200rpm (max)
- Air Volume/Velocity: 4.8(m/s)
- Noise level: 42(dB)

45W

4.8(m/s)

42(dB)

Class I

Minimum / Box quantity: 1

Minimum order quantity: 1



IP20

CE RoHS

Dimensions (mm)
430 x 300 x 480

Code: WL16RT

16" 60W 3 Speed Wall Fan with Remote Control (White)

- 60W - 220~240v/50Hz
- Oscillation & Tilt function with 2 core 0.5mm cable (complete with remote control)
- 4 colour box 1pc + master carton 4pcs
- Rotation speed: 1190rpm (max)
- Air Volume/Velocity: 4.9(m/s)
- Noise level: 41(dB)

60W

4.9(m/s)

41(dB)

Class II

Minimum / Box quantity: 1

Minimum order quantity: 1

FANS

Clip-On / Pedestal & Tower Fans - 3 Speed



IP20

UK CA CE RoHS

Dimensions (mm)
195 x 210 x 310



Code: TF6CLIP

6" 15W 2 Speed Dual Desk/Clip-On Fan (White)

- 15W - 220~240v/50Hz
- Oscillation & Tilt function with 2 core 0.5mm cable
- 4 colour box 1pc + master carton 4pcs
- Rotation speed: 2200rpm (max)
- Air Volume/Velocity: 3.8(m/s)
- Noise level: 37(dB)

15W

3.8(m/s)

37(dB)

Class II

Minimum / Box quantity: 1

Minimum order quantity: 1



IP20

UK CA CE RoHS

Dimensions (mm)
600 x 600 x 1250



Code: PF16N

16" 45W 3 Speed Pedestal Fan (White)

- 45W - 220~240v/50Hz
- Oscillation & Tilt function with 2 core 0.5mm cable
- 4 colour box 1pc + master carton 4pcs
- Rotation speed: 1200rpm (max)
- Air Volume/Velocity: 5(m/s)
- Noise level: 41(dB)

45W

5(m/s)

41(dB)

Class II

Minimum / Box quantity: 1

Minimum order quantity: 1



IP20

UK CA CE RoHS

Dimensions (mm)
600 x 600 x 1240



Code: PF16RT

16" 45W 3 Speed Pedestal Fan with remote control (White)

- 45W - 220~240v/50Hz
- Oscillation & Tilt function with 2 core 0.5mm cable (complete with remote control)
- 4 colour box 1pc + master carton 4pcs
- Rotation speed: 1300rpm (max)
- Air Volume/Velocity: 5.1(m/s)
- Noise level: 41(dB)

45W

5.1(m/s)

41(dB)

Class II

Minimum / Box quantity: 1

Minimum order quantity: 1



IP20

UK CA CE RoHS

Dimensions (mm)
260 x 260 x 810



Code: TWR30T

20 Hours 50W 3 Speed Tower Fan with Timer (White)

- 50W - 220~240v/50Hz
- Oscillation function with 2 core 0.5mm cable
- 4 colour box 1pc + master carton 4pcs
- Rotation speed: 1360(rpm)
- Air Volume/Velocity: 3.5(m/s)
- Noise level: 41(dB)

50W

3.5(m/s)

41(dB)

Class II

Minimum / Box quantity: 1

Minimum order quantity: 1

AIR CONDITIONERS

Plus - Dehumidifier



WARNING! To avoid overheating and risk of fire do not cover outlet grills, these heaters are not suitable for drying wet material or clothing.



Dimensions:
(H)750 x (W)450 x (D)390 mm

Code: ACPO9

Portable Air Conditioner 9000 BTU

- R290 - Refrigerant and auto frost protection function
- Compact and modern design to integrate with any decor
- Floor standing with omni-directional wheels for easy movement
- Complete with window sealing plate and 1.5m Long exhaust pipe
- 1.5m long cable with approved 10A 3pin plug and a remote control
- 0-24hrs programmable timer with remote control and low noise operation
- 3 in 1 Function: cooling, fan and dehumidifying with variable speed settings

PERFORMANCE DATA

| | |
|---------------------------------|-------------------|
| Air Volume/Velocity (cbm) | 320 M3/h Air flow |
| Noise level (dB) | 65dB(A) |
| Humidity removal capacity (L/h) | 24L / Day |



Dimensions:
(H)715 x (W)440 x (D)335 mm

Code: ACPO12

Portable Air Conditioner 12000 BTU

- R290 - Refrigerant and auto frost protection function
- Compact and modern design to integrate with any decor
- Floor standing with omni-directional wheels for easy movement
- Complete with window sealing plate and 1.5m Long exhaust pipe
- 1.5m long cable with approved 10A 3pin plug and a remote control
- 0-24hrs programmable timer with remote control and low noise operation
- 3 in 1 Function: cooling, fan and dehumidifying with variable speed settings

PERFORMANCE DATA

| | |
|---------------------------------|--------------------|
| Air Volume/Velocity (cbm) | 340 M3/h Air flow |
| Noise level (dB) | 65dB(A) |
| Humidity removal capacity (L/h) | 31.2L / Day |
| Exhaust Outlet (Ø x mm) | 1.5M long |
| Refrigerant | R290 - Refrigerant |

| |
|----------|
| 400(cmh) |
| n/a |
| 1.3L/H |
| Class I |
| IPX0 |

Minimum / Box quantity: n/a
Minimum order quantity: n/a



Features & Benefits

- BS EN60335-1:2012
- 220-240v/50Hz
- 2 Heat Settings: 1000W/2000W
- Normal/warm/hot selection
- Neon Power indicator light
- Adjustable thermostat
- Thermal automatic cut-out
- Overheating protection
- Flame retardant material
- 1.7Mtr 2 core cable fitted with BS1362 approved plug
- UKCA, CE, RoHS



WARNING! To avoid overheating and risk of fire do not cover outlet grills, these heaters are not suitable for drying wet material or clothing.



THERMO-GUARD

PROTECTED

HEATERS

Fan Heaters (complete with Plug & Connector)

Code: UFH2TN

2kW Upright Fan Heater & Thermostat

- Spray Painted Aluminium Blade
- Colour: White with carrying handle and integrated grill
- Frost watch protection
- 1.7Mtr 2 Core Cable fitted with BS1362 approved plug
- BS EN60335-1:2012, CE, RoHS
- G.W.: 1.2kg/ N.W.: 1kg

Class II

Minimum / Box quantity: 1/6

Minimum order quantity: 1



NEW

COMPLIES TO LOT 20

UK CA CE RoHS

Dimensions
(H)250 x (W)215 x (D)130 mm

Code: FH2TN

2kW Floor Fan Heater & Thermostat

- Colour Grey
- Cold Air, 2kW for instant heating
- Built-in thermal cut-out for added safety and frost watch protection
- 1.7mtr cable, fitted with bsi approved plug
- Complies to BS-EN60335-2-30 & IEC335-2-30
- G.W.: 1.2kg/ N.W.: 1kg

Class II

Minimum / Box quantity: 1/6

Minimum order quantity: 1



NEW

COMPLIES TO LOT 20

UK CA CE

Dimensions
(W)230 x (H)110 x (D)250 mm

Code: FH20AN

2kW Fan Heater Upright Oscillating with Thermostat

- Modern design and colour coordinated White body to suit all decors
- Streamline upright design which is stable and versatile
- Longer life & thermal link protected element
- Cold air, 2kW for instant heating
- Built-in thermal cut-outs for safety protection
- N.W.: 1.4kg

Class II

Minimum / Box quantity: 1/6

Minimum order quantity: 1



NEW

COMPLIES TO LOT 20

UK CA CE

Dimensions
(W)215 x (H)295 x (D)200 mm

HEATERS

Convactor Heaters (Floor Standing)

NEW

Features & Benefits

- UKCA, CE, GS, RoHS, BSEN 60335-1:2012
- 2000W - 220-240v/50Hz
- White body with Black handle and feet
- Automatic selection of 3 heat settings: 750W / 1250W / 2000W
- Adjustable room thermostat
- Easy to set timer On/Off function
- Over-heating protection with 2 safety fuse cut-outs built into heating elements
- Free standing (not wall mountable)
- Plug cord length: 1.8Mtr with 3 Core cable 1.0mm with BS1363 approved plug
- 4 Versions: Mini / Standard / Turbo (with fan heater) / Timer (with 24hr segment timer)
- G.V.: 2.4kgm N.V.: 2.9kgm
- Dimensions: (Floor) 590 x 430 x210
- Dimensions: (Wall) 590 x 372 x108
- Class I



Code: HC2DMINI

2kW Mini Convactor Heater - floor standing with thermostat

- 2000W - 220/240v~50Hz
- 1.5Mtr with 3 Core cable 1.0mm with BS1363 approved plug
- Free standing (not wall mountable)
- Complete with tip-over sensor and over-heat protection
- UKCA, CE, GS, RoHS, BSEN 60335-1:2012



Dimensions
495(W) x 327(H) x 200(D)mm

Class I

Minimum / Box quantity: 1/4

Minimum order quantity: 1



THERMO-GUARD

PROTECTED



Code: HC2D

2kW Convactor Heater - floor standing with thermostat

- 2000W - 220/240v~50Hz
- 1.8Mtr with 3 Core cable 1.0mm with BS1363 approved plug
- Free standing (not wall mountable)
- Complete with tip-over sensor and over-heat protection
- UKCA, CE, GS, RoHS, BSEN 60335-1:2012



Dimensions
590 x 430 x 210 mm

Class I

Minimum / Box quantity: 1/4

Minimum order quantity: 1



Code: HC2TF

2kW Convactor Heater with Turbo Fan Heater

- 2000W - 220/240v~50Hz
- 1.8Mtr with 3 Core cable 1.0mm with BS1363 approved plug
- Free standing (not wall mountable)
- Complete with tip-over sensor and over-heat protection
- UKCA, CE, GS, RoHS, BSEN 60335-1:2012



Dimensions
590 x 430 x 210 mm

Class I

Minimum / Box quantity: 1/4

Minimum order quantity: 1



Code: HC2TIM

2kW Convactor Heater with timer

- 2000W - 220/240v~50Hz
- 1.8Mtr with 3 Core cable 1.0mm with BS1363 approved plug
- Free standing (not wall mountable)
- Complete with tip-over sensor and over-heat protection
- UKCA, CE, GS, RoHS, BSEN 60335-1:2012



Dimensions
590 x 430 x 210 mm

Class I

Minimum / Box quantity: 1/4

Minimum order quantity: 1

HEATERS

Slimline Panel Heaters (Wall Mounted)

Features & Benefits

- Silent operation with instant, even flow of heat and overheat thermal safety protection cut-out
- Slim, compact and light design in corrosion resistant powder coated body.
- Highly efficient sheathed heating element with aluminium diffuser
- Easy to install using wall mounting bracket (pre-fitted)
- LCD digital control with adjustable thermostat & 24Hr/7Day programmable timer - moulded at rear on side

Suitable for use in hotels, restaurants and commercial properties

WARNING! To avoid overheating and risk of fire do not cover outlet grills, these heaters are not suitable for drying wet material or clothing.



COMPLIES TO LOT 20

UK CA CE GS RoHS

Dimensions
(W)500 x (H)400 x (D)85 mm

Code: PH0.75TIM/LCDN
 .75kW Panel Heater Digital LCD Control with Electronic Timer & Stat

- 750W - 220/240v~50Hz
- Wall mounted with square slotted grill for efficient heat circulation
- Complete with tip-over sensor and over-heat protection
- UKCA, CE, GS, & RoHS

IP24
Class I

Minimum / Box quantity: 1
 Minimum order quantity: 1



COMPLIES TO LOT 20

UK CA CE GS RoHS

Dimensions
(W)500 x (H)400 x (D)85 mm

Code: PH1TIM/LCDN
 1kW Panel Heater Digital LCD Control with Electronic Timer & Stat

- 1000W - 220/240v~50Hz
- Wall mounted with square slotted grill for efficient heat circulation
- Complete with tip-over sensor and over-heat protection
- UKCA, CE, GS, & RoHS

IP24
Class I

Minimum / Box quantity: 1
 Minimum order quantity: 1



COMPLIES TO LOT 20

UK CA CE GS RoHS

Dimensions
(W)640 x (H)400 x (D)85 mm

Code: PH1.5TIM/LCDN
 1.5kW Panel Heater Digital LCD Control with Electronic Stat

- 1500W - 220/240v~50Hz
- Wall mounted with square slotted grill for efficient heat circulation
- Complete with tip-over sensor and over-heat protection
- UKCA, CE, GS, & RoHS

IP24
Class I

Minimum / Box quantity: 1
 Minimum order quantity: 1



COMPLIES TO LOT 20

UK CA CE GS RoHS

Dimensions
(W)940 x (H)400 x (D)85 mm

Code: PH2TIM/LCDN
 2kW Panel Heater Digital LCD Control with Electronic Timer & Stat

- 2000W - 220/240v~50Hz
- Wall mounted with square slotted grill for efficient heat circulation
- Complete with tip-over sensor and over-heat protection
- UKCA, CE, GS, & RoHS

IP24
Class I

Minimum / Box quantity: 1
 Minimum order quantity: 1

HEATERS

Convactor Heaters (Floor Standing)



WARNING! To avoid overheating and risk of fire do not cover outlet grills, these heaters are not suitable for drying wet material or clothing.



NEW



UK CA CE GS RoHS

Dimensions
570(W) x 450(H) x 110(D) mm

Features & Benefits

- New range
- LCD control with thermostat
- Silent operation with instant heat
- wall mounted
- Open window function



Code: SPH1

1kW Digital LCD Control Panel Heater with thermostat

- 1000W - 220/240V~50Hz
- 1.5m, with ferrules on the ends of the cable
- Wall mountable
- Complete with tip-over sensor and over-heat protection
- UKCA, CE

IPX4

Class I

Minimum / Box quantity: 1/4

Minimum order quantity: 1



UK CA CE GS RoHS

Dimensions
720(W) x 450(H) x 110(D) mm



Code: SPH1.5

1.5kW Digital LCD Control Panel Heater with thermostat

- 1500W - 220/240V~50Hz
- 1.5m, with ferrules on the ends of the cable
- Wall mountable
- Complete with tip-over sensor and over-heat protection
- UKCA, CE

IPX4

Class I

Minimum / Box quantity: 1/4

Minimum order quantity: 1



UK CA CE GS RoHS

Dimensions
870(W) x 450(H) x 110(D) mm



Code: SPH2

2kW Digital LCD Control Panel Heater with thermostat

- 1000W - 220/240V~50Hz
- 1.5m, with ferrules on the ends of the cable
- Wall mountable
- Complete with tip-over sensor and over-heat protection
- UKCA, CE

IPX4

Class I

Minimum / Box quantity: 1/4

Minimum order quantity: 1

ALUMINIUM PANEL HEATER - 1800W

Digital LCD Display with Remote Control



NEW RANGE



WARNING! To avoid overheating and risk of fire do not cover outlet grills, these heaters are not suitable for drying wet material or clothing.



NEW

FEATURES & BENEFITS

- Slim compact and light design with 12 fins
- Suitable for size 20m² for maximum heating
- Silent operation with 'Instant On'
- Durable corrosion resistant powder coated Aluminium body

FEATURE HIGHLIGHTS

- 24 Hour and Weekly Timer
- Digital display/control or via remote control
- Adjustable thermostat with overheat protection, Waterproof
- Dry Aluminium heating element with 2 heat settings

Code: HTPN15 / HTPN18

1.5-1.8kW Aluminium Panel Heater with LCD display and remote control - 220/240V~50Hz

- 1.5m, with ferrules on the ends of the cable
- Wall mountable / Floor standing
- Complete with tip-over sensor and over-heat protection
- UKCA, CE

Dimensions

HTPN15 - 860(W) x 630(H) x 255(D) mm

HTPN18 - 1000(W) x 630(H) x 255(D) mm

IP24

Class I

Minimum / Box quantity: 1/4

Minimum order quantity: 1



Features & Benefits

- Controllable over WiFi with the TUYA Smart App
- Digital display/control
- 24 Hour and Weekly Timer
- 2 Heat Settings (1000w - 1500w)
- Suitable Room Size 15m²
- Adjustable Thermostat, Overheat Protection, Waterproof



HPGS2BKSM

WARNING! To avoid overheating and risk of fire do not cover glass panel, these heaters are not suitable for drying wet material or clothing.

Glass Series - WiFi Panel Heaters

Wifi Enabled Glass Panel Heaters



HP2WHSM



HP15WHSM

Product Summary

The AirMaster Smart Wifi Enabled Panel Heater is a modern, ultra slim design for a seamless stylish integration with any interior deco. It is ErP compliant packed with a variety of useful features for an energy efficient heating solution. It features a 24/7 programmable timer - perfect for use in living rooms, bedrooms, offices, reception / waiting areas and more. WiFi App control enabled for heating control from your smartphone. Works with Amazon Alexa and Google Assistant with the Tuya App.

Get the "Tuya" WiFi App

1. Use your phone to scan the QR code below or search "Tuya" in the application market place to download and install the App.
2. Select your country code, enter the cellphone number and tap "Get" to get a message containing the verification code.
3. Enter the verification on code in the message and tap "Login" to access the App.
4. Go to the App, tap "add device" at the bottom, as shown below.



| Code | Description | Finish | Wattage | Dimensions (mm) | Ingress | Min/Qty |
|-----------|---|--------|---------|-----------------|---------|---------|
| HP15WHSM | 1.5KW Glass/Metal WiFi Enabled Panel Heater | White | 1500W | 760 x 460 x 250 | IP24 | n/a |
| HP2WHSM | 2KW Glass/Metal WiFi Enabled Panel Heater | White | 2000W | 920 X 460 X 250 | IP24 | n/a |
| HPGS2BKSM | 2KW Glass/Metal WiFi Enabled Panel Heater | Black | 2000W | 920 x 430 x 240 | IP24 | n/a |



HEATERS

Oil Filled radiators (500W - 2000W)



WARNING! To avoid overheating and risk of fire do not cover fins, these radiators are not suitable for drying wet material or clothing.

THERMO-GUARD

PROTECTED



UK CA CE RoHS

Dimensions
(H)660 x (W)175 x (D)455 mm



Code: CR15

1.5kW Oil Filled Radiator

- 3 heat settings 600W / 900W / 1500W
- 7 fins - 15cm wide with 6 Oil channels per fin

G.W.:15.5kg

N.W.:14.3Kg

Minimum / Box quantity: 1

Minimum order quantity: 1



UK CA CE RoHS

Dimensions
(H)655 x (W)230x (D)385 mm



Code: CR15T

1.5kW Oil Filled Radiator with Thermostat & Timer

- 3 heat settings 600W / 900W / 1500W
- 7 fins - 14cm wide with 5 Oil channels per fin

G.W.:15.5kg

N.W.:7.6Kg

Minimum / Box quantity: 1

Minimum order quantity: 1



UK CA CE RoHS

Dimensions
(H)660 x (W)175 x (D)540 mm



Code: CR2

2kW Oil Filled Radiator 1/2kW with thermostat

- 3 heat settings 800W / 1200W / 2000W
- 9 fins - 15cm width with 6 Oil channels per fin

G.W.:18.1kg

N.W.:16.9Kg

Minimum / Box quantity: 1

Minimum order quantity: 1



UK CA CE RoHS

Dimensions
(H)660 x (W)175 x (D)540 mm



Code: CR2T

2kW Oil Filled Radiator 1/2kW with thermostat & timer

- 3 heat settings 800W / 1200W / 2000W
- 9 fins - 15cm wide with 6 Oil channels per fin
- 24hrs timer with 15 mins segments

G.W.:18.1kg

N.W.:16.9Kg

Minimum / Box quantity: 1

Minimum order quantity: 1



UK CA CE RoHS

Dimensions
(H)660 x (W)170 x (D)630 mm



Code: CR25

2.5kW Oil Filled Radiator

- 3 heat settings 1000W / 1500W / 2500W
- 11 fins - 15cm width with 6 Oil channels per fin

G.W.:21kg

N.W.:19Kg

Minimum / Box quantity: 1

Minimum order quantity: 1



UK CA CE RoHS

Dimensions
(H)380 x (W)135x (D)430mm



Code: CRMINI

0.5kW Oil Filled Radiator

- 6 oil channels per fin
- Convenient cord storage
- Carrying handle

G.W.:5.3kg

N.W.:4.5Kg

Minimum / Box quantity: n/a

Minimum order quantity: 1

HEATERS

Frost Watch / Warm Air Curtain & Bathroom Heaters



Code: **FW400**

400W Wall Mounting Frost Watcher with Thermostat and Safety Cut-Out

- 400W heat output
- Silent operation with Anti-frost protection and automatic safety cut-out
- Wall mounted with indicator light
- Fitted with 13A plug fused at 5A and 1.5mtrs flex cable
- Made to BS EN 60335-2-30 British standard

400W

240v/50Hz

G.W.:1.1Kg

Minimum / Box quantity: 1/10

Minimum order quantity: 1



Dimensions (mm)
260 x 245 x 150mm



Code: **WAC3**

3kW Single Door Warm Air Curtain

- Aesthetic slimline body, ideal for mounting over doors
- Sheet Steel with a powder coating epoxy White painted finish
- Ceiling or wall mounting with bracket
- Switched controls for fan only
- BS EN60335-2-30:2009, UKCA, CE approval

3000W

240v/50Hz

G.W.:5.2Kg

Minimum / Box quantity: 1

Minimum order quantity: 1



Dimensions (mm)
580 x 205 x 104.5mm



Code: **IR1200**

1200W Quartz Infra-red Bathroom Heater - IP20

- New modern streamline design with adjustable body for directional heating to point where required
- Wall mounting with pull-cord switch
- Indicator light showing power is on or off
- Output: 1200W (2 Bar) or 1500W (3 Bar)
- BS EN60335-2 approved

1200W

240v/50Hz

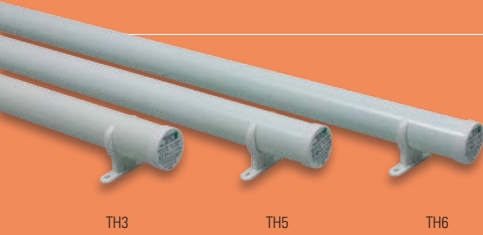
Chrome

Minimum / Box quantity: 1/6

Minimum order quantity: 1



Dimensions (mm)
135 x 160 x 560mm



TH3

TH5

TH6

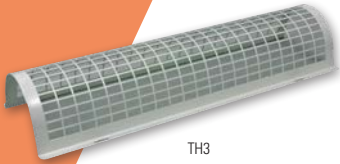
Features & Benefits

- BSEN 60335-1:2012
- 220-240v/50Hz
- Heating element with fibreglass cover
- White enamel finish
- Wall mounting
- Steel tube
- 1.5Mtr VDE approved cable



| OLD Code | Description | Wattage | Dimensions (mm) | Guard Codes | Min/Qty |
|----------|-------------------|---------|-----------------|-------------|---------|
| TH1 | 1' Tubular Heater | 45W | 300 x 80 x 90 | TH1G | 1/4 |
| TH2 | 2' Tubular Heater | 90W | 600 x 80 x 90 | TH2G | 1/4 |
| TH3 | 3' Tubular Heater | 135W | 900 x 80 x 90 | TH3G | 1/4 |
| TH4 | 4' Tubular Heater | 180W | 1200 x 80 x 90 | TH4G | 1/4 |
| TH5 | 5' Tubular Heater | 225W | 1500 x 80 x 90 | TH5G | 1/4 |
| TH6 | 6' Tubular Heater | 270W | 1800 x 80 x 90 | TH6G | 1/4 |

| NEW Code | Description | Wattage | Dimensions (mm) | Guard Codes | Min/Qty |
|----------|-------------------|---------|-----------------|-------------|---------|
| HTTU1 | 1' Tubular Heater | 60W | 310 x 100 x 80 | TH1G | n/a |
| HTTU2 | 2' Tubular Heater | 120W | 610 x 100 x 80 | TH2G | n/a |
| HTTU3 | 3' Tubular Heater | 180W | 910 x 100 x 80 | TH3G | n/a |
| HTTU4 | 4' Tubular Heater | 240W | 1220 x 100 x 80 | TH4G | n/a |
| HTTU5 | 5' Tubular Heater | 300W | 1510 x 100 x 80 | TH5G | n/a |
| HTTU6 | 6' Tubular Heater | 360W | 1810 x 100 x 80 | TH6G | n/a |



TH3

| Code | Description | Dimensions (mm) | Min/Qty |
|------|-------------------------|-----------------|---------|
| TH1G | 1' Tubular Heater Guard | n/a | 1/5 |
| TH2G | 2' Tubular Heater Guard | n/a | 1/5 |
| TH3G | 3' Tubular Heater Guard | n/a | 1/5 |
| TH4G | 4' Tubular Heater Guard | n/a | 1/5 |
| TH5G | 5' Tubular Heater Guard | n/a | 1/5 |
| TH6G | 6' Tubular Heater Guard | n/a | 1/5 |

Boiler Rings (Counter Top Cookers)



BR2

BR1

Features & Benefits

- CE, GS approved
- Voltage: 220-240VAC/50Hz
- 3Mtr 3 core cable fitted with BS1362 approved plug with 13A fuse
- Corrosion resistant non-stick cast iron body with cast iron non-stick coated plates
- Operating on/off indicator light with variable heat control and auto-thermostat control - overheat protection
- Non-stick rubber feet
- Colour: White



Wall Mounted

Optional Guard

| Code | Description | Dimensions (mm) | Hotplate (mm) | Min/Qty |
|------|------------------------------------|-----------------|---------------|---------|
| BR1 | 1.5kW Boiling Ring with Thermostat | 255 x 255 | Ø185 | 1/6 |
| BR2 | 2.5kW Boiling Ring with Thermostat | 460 x 255 | Ø185 & Ø145 | 1/4 |



NEW RANGE

HEATERS

2kW & 3kW Industrial Fan Heaters

Features & Benefits

- Supplied complete with cord and 13A BS approved 3 pin plug
- 3 Settings (Fan Only) 25/Medium1500/High3000W) with heat resistant carrying handle
- Sturdy and durable with rubber feet for extra stability, stainless steel heating element
- Quiet running with up to 40m³ heating area capacity, no fumes, no odors or humidity

Product Summary

The CED Airmaster Industrial Fan Heaters are designed for heavy duty industrial usage. These simple and effective designs are sturdy and durable with safety and performance in focus. Fitted with over-heat protection and rubber feet for extra stability.

They are available at 2kW and 3kW with 3 heat settings with heat resistant handy carrying handle for portable heating wherever you need it. The adjustable fan speed ensures you achieve your required temperature for your environment and the inbuilt fan can be use for cold air cooling with the low setting when necessary.



HTIF2



WARNING! To avoid overheating and risk of fire do not cover outlet grills, these heaters are not suitable for drying wet material or clothing.

| Code | Description | Finish | Wattage | Dimensions (mm) | Mounting | Mounting Bracket | Ingress | Min/Qty |
|-------|---------------------------|--------|---------|-----------------|---------------|------------------|---------|---------|
| HTIF2 | 2kW Industrial Fan Heater | Red | 2000W | 213 x 197 x 320 | Free Standing | ✘ | IPX4 | n/a |
| HTIF3 | 3kW Industrial Fan Heater | Red | 3000W | 262 x 251 x 400 | Free Standing | ✘ | IP X4 | n/a |

NEW



HTIR2WL

NEW



HTIR3WL

NEW RANGE

Outdoor Heaters

Quartz / Infra-Red / Halogen Heaters

 COMPLIES TO LOT 20

Features & Benefits

- Controllable over WiFi with the TUYA Smart App
- Digital display/control
- 24 Hour and Weekly Timer
- 2 Heat Settings (1000w - 1500w)
- Suitable Room Size 15m²
- Adjustable Thermostat, Overheat Protection, Waterproof



NEW

HTQU2PD



NEW

HTIR15PD



NEW

HTIR2PD



NEW

HTIR2TR



IRH2MINI

| Code | Description | Finish | Wattage | Dimensions (mm) | Mounting | Mounting Bracket | Ingress | Min/Qty |
|------------------|--|--------------|---------|------------------|---------------|------------------|---------|---------|
| Quartz | | | | | | | | |
| HTQU2PD | 2000W Quartz Pedestal Heater | White | 2000W | 2100 x 500 x 500 | Wall or Floor | ✓ | IP X4 | n/a |
| Infra-Red | | | | | | | | |
| HTIR2TR | 2000W Infra-Red Tower Heater | Black/Silver | 2000W | 290 x 1010 x 290 | Free Standing | ✗ | IP34 | n/a |
| HTIR2WL | 750/1500/2000W Infra-Red Wall Heater | Silver | 2000W | 630 x 105 x 150 | Wall Mounted | ✓ | IP34 | n/a |
| HTIR3WL | 950/1400/2800W Infra-Red Wall Heater | Silver | 3000W | 955 x 105 x 150 | Wall Mounted | ✓ | IP34 | n/a |
| IRH2MINI | 2000W Mini wall mounting infrared heater | Black/Silver | 2000W | 460 x 190 x 75 | Wall Mounted | ✓ | IP65 | n/a |
| Halogen | | | | | | | | |
| HTIR15PD | 1500W Halogen Pedestal Heater | Black | 1500W | 510 x 2030 x 510 | Free Standing | ✗ | IP34 | n/a |
| HTIR2PD | 2000W Halogen Pedestal Heater | Silver | 2000W | 605 x 2100 x 605 | Free Standing | ✗ | IP34 | n/a |





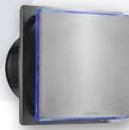
Features & Benefits

- Slim and quiet with timer
- Ideal for most domestic operations
- Low noise
- LED indication when on
- Meets part F building regulations

Suitable for kitchens, bathrooms and toilets. Designed to be fitted into walls and ceilings. Modern design with built-in LED array, easy to wipe clean and duct over short lengths (2m Max). Ideal solution for removing damp moist air, odours and airborne pollutants from kitchens, toilets and bathrooms.



RFP4T



RFP4T/SS



RFP4T/CHR



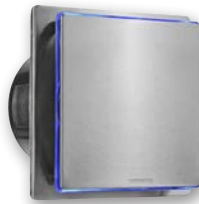
RFP4T/GL



RFP4TM/GL



RFP6T



RFP6T/SS



RFP6T/CHR

| Code | Description | Finish | Timer | Dimensions (mm) | Cut Hole (mm) | Air Volume (cbm) | Noise Level (dB) | Box/Oty |
|-----------|--|--------------|-------|-----------------|---------------|------------------|------------------|---------|
| RFP4T | 4 inches Extractor fan with timer, White | White | Yes | 158 x 158 x 40 | 105Ø | 74.8 | 35 | 1 |
| RFP4T/SS | 4" Extractor fan with timer, Stainless Steel | S/Steel | Yes | 158 x 158 x 40 | 105Ø | 74.8 | 35 | 1 |
| RFP4T/CHR | 4 inches Extractor fan with timer, Chrome | Chrome | Yes | 158 x 158 x 40 | 105Ø | 74.8 | 35 | 1 |
| RFP4T/GL | 4 inch Extractor Fan with timer, White and Glass | White | Yes | 158 x 158 x 40 | 105Ø | 74.8 | 35 | 1 |
| RFP4TM/GL | 4 inch Extractor Fan with timer and motion sensor, White Glass | White/ Glass | Yes | 158 x 158 x 40 | 105Ø | 74.8 | 35 | 1 |
| RFP6T | 6" Extractor Fan with timer, White | White | Yes | 196 x 196 x 169 | 155Ø | 220.93 | 45 | 1 |
| RFP6T/SS | 6" Extractor Fan with timer, Stainless Steel | S/Steel | Yes | 196 x 196 x 169 | 155Ø | 220.93 | 45 | 1 |
| RFP6T/CHR | 6" Extractor Fan with timer, Chrome | Chrome | Yes | 196 x 196 x 169 | 155Ø | 220.93 | 45 | 1 |

Features & Benefits

- BS EN60335-1: 2012
- 220-240v/50Hz
- Class II (double insulated)
- IPX4 - UKCA, CE, GS approved



VENTILATION

4" & 6" XF Series Extractor Fans

4" & 6" extractor fans are sold in three versions

- Standard basic model:
- Fan works with a light switch or external switch
- Full cord model:
- Fan is switched off with a double pole pull cord switch fitted in the extractor fan
- Timer model:
- Fans starts working with a light switch unit and stops operating after a pre-set number of minutes of the light being switched off

XF6S/XF6P/XF6T 6" Extractor Fans - Wall

- Double insulated
- Air movement: 230 cubic Mtrs/hr
- Rated: 44.8(dB)
- Power consumption: 25W (max)
- Complete with comprehensive installation instructions

XF4S/XF4P/XF4T 4" Extractor Fans - Wall

- Class II (double insulated)
- Air movement: 80 cubic Mtrs/hr
- Rated: 48.6(dB)
- Power consumption: 20W (max)
- Complete with comprehensive installation instructions
- Suitable for the ventilation of toilets and bathrooms in accordance with IEE & Building regulations



Extractor Fans Grills

| Code | Description | Box/Qty |
|-------|--------------------------|---------|
| XFG4B | 4" Wall Grill Brown | 1/20 |
| XFG4W | 4" Wall Grill White | 1/20 |
| XFG6B | 6" Fixed Grill Brown | 1/10 |
| XFG6W | 6" Fixed Grill White | 1/10 |
| XGG4B | 4" Gravity Grill Brown | 1/10 |
| XGG4G | 4" Gravity Grill Grey | 1/10 |
| XGG4W | 4" Gravity Grill White | 1/10 |
| XGG6B | 6" Gravity Shutter Brown | 1/10 |
| XGG6W | 6" Gravity Shutter White | 1/10 |

| Code | Description | Timer | Dimensions (mm) | Box/Qty |
|------|-------------------|------------|-----------------|---------|
| XF4S | 4" Fan Standard | Continuous | 164 x 154 x 88 | 1/18 |
| XF4P | 4" Fan Pull Cord | Continuous | 164 x 154 x 88 | 1/18 |
| XF4T | 4" Fan with Timer | 2-30 mins | 164 x 154 x 88 | 1/18 |
| Code | Description | Timer | Dimensions (mm) | Box/Qty |
| XF6S | 6" Fan Standard | Continuous | 230 x 200 x 115 | 1/12 |
| XF6P | 6" Fan Pull Cord | Continuous | 230 x 200 x 115 | 1/12 |
| XF6T | 6" Fan with Timer | 2-30 Mins | 230 x 200 x 115 | 1/12 |

VENTILATION

XSF Series - In-line Shower Extractor Fan Kits



XSF4T

4" & 6" In-line Shower Extractor Fan Kit

- BS EN60335-1: 2012
- Kit comprises of two grills, one in-line fan and 3Mtr length of ducting with fixing cable ties
- Supplied with comprehension installation instructions
- Air movement: 4" - 95 cubic Mtrs/hr
Power consumption: 4" - 20W (max)
- Voltage: 220-240v/50Hz



| Code | Description | Mounting | Timer | Dimensions (mm) | Min/Qty |
|-------|-----------------------------------|---------------|------------|-----------------|---------|
| XSF4S | 4" Standard In-line Fan | Flat Position | Continuous | 156 x 147 | 1/8 |
| XSF4T | 4" Standard In-line Fan c/w Timer | Flat Position | 2-20 mins | 156 x 147 | 1/8 |

SF Series - Shower Fans (4")



Code: XCF100

4" Centrifugal Extractor Fan

- Suitable for use where the ducting length is two metres or more
- Wall or ceiling mounting with integral back draft shutter
- Air movement: 110 cubic Mtrs/hr
- Power consumption: 45W (max)
- Double insulated units
- IPX4 BS EN60335-2

45W (max)

240v/50Hz

G.V.:n/a

Minimum / Box quantity: 1/12

Minimum order quantity: 1



Dimensions (mm)
240 x 170 x 125mm

Flexible Ducting - PVC & Aluminium



XD43P

XD63P

XD4AL

Flexible Ducting

- Manufactured from flame retardant PVC material
- 100mm for 4" & 150mm for 6"
- White PVC ducting available in 3 metre lengths
- Each piece is separately netted and individually packed
- PVC in 3Mtr length / Aluminium in 0.32Mtr length



| Code | Description | Length | Material | Colour | Box/Qty |
|-------|----------------------|--------|-----------|--------|---------|
| XD43P | 4" PVC Ducting | 3Mtr | PVC | White | 1/24 |
| XD63P | 6" PVC Ducting | 3Mtr | PVC | White | 1/12 |
| XD4AL | 4" Aluminium Ducting | 320mm | Aluminium | Silver | 1/24 |
| XD6AL | 6" Aluminium Ducting | 320mm | Aluminium | Silver | 1/24 |

XFE4T12V



XFE4T12TC

Controller for XFE4T12V

- BS EN60335 part 102-342
- Neon indicator fitted to all models
- Output: 12VAC/50Hz, 30vA 30W (max) SELV
- Double insulated
- IP30



Dimensions (mm)
145 x 90 x 55mm



Code: XFE4T12V

4" Extractor Fan 12v (no Controller)

- Fixed Grill Safety Extractor Fan Extra Low Voltage (without Controller)
- Fitted with 12vAC/50Hz
- Air movement: 95 cubic Mtr/hr
- Voltage: 12vAC/50Hz
- Double insulated units
- IPX4 BS EN60335 part 102-342

30W

12v/50Hz

G.W.:n/a

Minimum / Box quantity: 1

Minimum order quantity: 1

Code: XFE4T12TC

Controller for 12V Fan with Timer

- Neon indicator fitted to all models
- Output: 12vAC/50Hz, 30vA 30W (max) SELV
- Double insulated
- IP30 BS EN60335 part 102-342

30W

12v/50Hz

G.W.:n/a

Minimum / Box quantity: 1

Minimum order quantity: 1



Dimensions (mm)
165 x 155 x 88mm



VENTILATION

Low Voltage XF Series - 12v Extractor Fan

4" Extractor 12 Volt Safety Extractor Fan (Extra Low Voltage)

- These fans are designed to be safely fitted over or within 0.6Mtrs of a bath or shower where current regulations prevent the use of conventional fan motors
- Fitted with 12VAC/50Hz
- Air movement: 95 cubic Mtr/hr
- Voltage: 12VAC/50Hz
- Double insulated units
- IPX4 BS EN60335 part 102-342





FKUV30



FKUV30L



HYGIENE

Fly Killers - Domestic & Industrial

20W - 30W Fly Killer (Industrial)

- Approved transformer with magnetic ballast
- High quality lamps 8,000 hrs tube
- Dual Mounting: Wall/Ceiling
- Construction: Silver body with plastic end caps
- Colour: Silver
- Voltage: 240vAC/50Hz - Grid voltage: 2200W killing grid
- Fuse protection: 2 Amp
- BS EN60335, (TUV-GS) EMC CE - IPX0 protection class
- Suitability: Food factories, restaurants, bars & cafés, hospitals, chemists, supermarkets, fast food and butchers etc.

FK6 - 10W Fly Killer (Domestic)

- Mounting: Free standing or ceiling mounted
- Effective Coverage Area: 5Mtr²
- Colour: Black finish
- Voltage: 230vAC ~50Hz
- Grid Voltage: 1100vDC
- Lamp: 10W - UV lamp
- Suitability: Indoor use only
- Dimensions: (H)315 x (D)Ø133mm
- BS EN60335, (TUV-GS) EMC CE



| Code | Wattage | Mtrs ² | Lamp Code | Dimensions (mm) | Box/Qty |
|------------|---------|-------------------|-----------|-----------------|---------|
| Domestic | | | | | |
| FK6 | 10 | 5 | FK6L | 315 x Ø133 | 1/12 |
| Industrial | | | | | |
| FKUV20 | 20 | 80 | FKUV20L | 392 x 113 x 298 | 1/4 |
| FKUV30 | 30 | 120 | FKUV30L | 498 x 113 x 330 | 1/3 |

| Code | Description | Min/Box |
|---------|-----------------|---------|
| BFK10L | Lamp for BFK20 | 1 |
| FKUV20L | Lamp for FKUV20 | 1 |
| FKUV30L | Lamp for FKUV30 | 1 |

FK6



A comprehensive range of warm air dryers suitable for most environments'

2.5kW Hand Dryer (Heavy Duty)

- Voltage: 2500W 240v/50Hz
- Cable: 3 Core x 1.5mm 1 Mtrs 13A
- 360° rotating nozzle to suit hand or face use
- Long lasting motor, durable, vandal-proof and energy saving
- BS EN60335-2:2003 - IP21



Code: HDM25ACHR

Satin Chrome 2.5kW Non-Inductive Motor

- Heavy Duty Chrome Steel Construction
- Long lasting motor, durable, vandal-proof
- Air velocity: 30m/s / Air volume: 270 Cubic Mtr/hr
- Push button: 35 second every press / 10-15 secs (drying time)
- IP21 - BS EN60335-2:2003

2500W

240v/50Hz

G.W.:6.0Kg

Minimum / Box quantity: 1/4

Minimum order quantity: 1



THERMO-GUARD
PROTECTED

UK CA CE RoHS
Dimensions (mm)
270 x 240 x 200mm

Code: HDM25AWHI

White 2.5kW Non-Inductive Motor

- Heavy Duty White (powder coated) Diecast Aluminium
- Long lasting motor, durable, vandal-proof
- Air velocity: 30m/s / Air volume: 270 Cubic Mtr/hr
- Push button: 35 second every press / 10-15 secs (drying time)
- IP21

2500W

240v/50Hz

G.W.:6.0Kg

Minimum / Box quantity: 1/4

Minimum order quantity: 1



THERMO-GUARD
PROTECTED

UK CA CE RoHS
Dimensions (mm)
270 x 240 x 200mm

Code: HDM25PCHR

Push Button - Satin Chrome with 2.5kW Non-Inductive Motor

- Heavy Duty Chrome Steel Construction
- Long lasting motor, durable, vandal-proof
- Air velocity: 30m/s / Air volume: 270 Cubic Mtr/hr
- Push button: 35 second every press / 10-15 secs (drying time)
- IP21

2500W

240v/50Hz

G.W.:n/a

Minimum / Box quantity: 1/4

Minimum order quantity: 1



THERMO-GUARD
PROTECTED

UK CA CE RoHS
Dimensions (mm)
270 x 240 x 192mm

Code: HDM25PWHI

Push Button - White with 2.5kW Non-Inductive Motor

- Heavy Duty White (powder coated) Diecast Aluminium
- Long lasting motor, durable, vandal-proof
- Air velocity: 30m/s / Air volume: 270 Cubic Mtr/hr
- Push button: 35 second every press / 10-15 secs (drying time)
- IP21

2500W

240v/50Hz

G.W.:n/a

Minimum / Box quantity: 1/4

Minimum order quantity: 1



THERMO-GUARD
PROTECTED

UK CA CE RoHS
Dimensions (mm)
270 x 240 x 192mm



Code: HD2000A

White 2kW Polycarbonate ABS Eco Hand Dryer

- Warm air 2000W ABS Eco Hand Dryer
- Air Volume/Velocity: 36km/h
- Drying time: 20-30 (secs)
- Cut-out Temperature: 105°C
- Noise level: 1Mtr - 65(dB)
- IPX1

2000W

240v/50Hz

G.W.:2.0Kg

Minimum / Box quantity: 1

Minimum order quantity: 1

UK CA CE RoHS

AUTOMATIC

DRIP PROTECTED

UK CA CE RoHS

Fixing Centre (mm)
Top 136 & bottom 192
Dimensions (mm)
262 x 274 x 196mm



Code: HD1800A

White 1.8kW Polycarbonate ABS Hand Dryer (Automatic)

- White ABS Polycarbonate body with drip protection
- Auto power off after 1 min continuous working adjustable sensor (timer) and thermal cut out protection
- Noise level: 1Mtr - 65(dB)
- IP21

1800W

240v/50Hz

G.W.:n/a

Minimum / Box quantity: 1/4

Minimum order quantity: 1

AUTOMATIC

UK CA CE RoHS

Dimensions (mm)
245 x 263 x 245mm



Code: HDM18A

White 1.8kW Diecast Hand Dryer (Automatic)

- Sleek Euro-style design with Die-cast durable fireproof cover
- Air velocity: 18M/s / Air volume: 147 Cubic Mtr/hr
- Drying time 30 secs - 60 Seconds for each cycle
- IP21 - BS EN60335-2

1800W

240v/50Hz

G.W.:n/a

Minimum / Box quantity: 1

Minimum order quantity: 1

THERMO-GUARD

PROTECTED



1.9kW Blade - High Speed Jet Hand Dryer

Code: **HDBL1**

- Energy efficient and more hygienic
- 85-95M/s air speed / Noise Level: 70dB
- DC brush less motor reduces wear and tear
- 5-7 Second drying time
- 1000 uses daily service / stable operation
- Removable drip tray with water indicator
- Sensors at top and bottom of unit detect hand presence and removal
- Colour: White
- Rated: Indoor use only
- 220-240vAC ~ 50/60Hz
- Weight: 11kg
- IEC 60335-2-23, UKCA, CE & RoHS approval

1900W

240v/50Hz

G.W.:11.0Kg

Minimum / Box quantity: 1

Minimum order quantity: 1

UK CA CE RoHS

THERMO-GUARD

PROTECTED



Code: **HDHS11**

1.1kW Hand Dryer ABS (White)

- White (powder coated) ABS body with long lasting motor
- Air Speed: 90(m/s) / Noise level: 72dB
- Automatic operation with 10-15 secs (drying time)
- IPX1 - IEC 60335-2-23, UKCA, CE & RoHS approval

1100W

240v/50Hz

G.W.:3.5Kg

Minimum / Box quantity: 1

Minimum order quantity: 1

UK CA CE RoHS

Dimensions (mm)
248 x 250 x 178mm

THERMO-GUARD

PROTECTED



Code: **HDT2WHI**

1.8kW Automatic Turbo Hand Dryer (White)

- Heavy Duty Chrome Steel Construction
- Carbon brush motor, sensing indicator lamp (LED)
- Air speed: 90(m/s) / Noise Level: 72dB
- Automatic operation with 7-10 secs (drying time)
- IPX1 - IEC 60335-2-23, UKCA, CE & RoHS approval

1800W

240v/50Hz

G.W.:6.0Kg

Minimum / Box quantity: 1

Minimum order quantity: 1

UK CA CE RoHS

Dimensions (mm)
278 x 172 x 325mm

THERMO-GUARD

PROTECTED



Code: **HDT2CHR**

1.8kW Automatic Turbo Hand Dryer (Chrome)

- Heavy Duty Chrome Steel Construction
- Carbon brush motor, sensing indicator lamp (LED)
- Air speed: 90(m/s) / Noise Level: 72dB
- Automatic operation with 7-10 secs (drying time)
- IPX1 - IEC 60335-2-23, UKCA, CE & RoHS approval

1800W

240v/50Hz

G.W.:6.0Kg

Minimum / Box quantity: 1

Minimum order quantity: 1

UK CA CE RoHS

Dimensions (mm)
278 x 172 x 325mm



Suitable for 'commercial applications'

HYGIENE

High Speed Hand Dryers

Features & Benefits

- Cable: 3 Core x 1mm 1Mtr 13A 3 pin fused moulded plug

AUTOMATIC



Dimensions (mm)
295x171x325mm



Code: **HDCT18WHI**

1.8kW Automatic Compact High Speed Hand Dryer (White)

- Stainless steel 304 panel construction (thickness of 1.5mm)
- 12± 3cm sensing distance
- Air speed: 90(m/s) / Noise Level: 72dB
- Automatic operation with 7-10 secs (drying time)
- IPX1 - made to IEC 60335-2-23 standard

| |
|------------|
| 1800W |
| 240v/50Hz |
| G.W.:4.5Kg |

Minimum / Box quantity: 1
Minimum order quantity: 1

AUTOMATIC



Dimensions (mm)
295x171x325mm



Code: **HDCT18CHR**

1.8kW Automatic Compact High Speed Hand Dryer (Chrome)

- Stainless steel 304 panel construction (thickness of 1.5mm)
- 12± 3cm sensing distance
- Air speed: 90(m/s) / Noise Level: 72dB
- Automatic operation with 7-10 secs (drying time)
- IPX1 - made to IEC 60335-2-23 standard

| |
|------------|
| 1800W |
| 240v/50Hz |
| G.W.:4.5Kg |

Minimum / Box quantity: 1
Minimum order quantity: 1

AUTOMATIC



Dimensions (mm)
260 x 180 x 157mm



Code: **HDMINI/CHR**

650W/1200W Automatic Stainless Steel hand Dryer (Chrome)

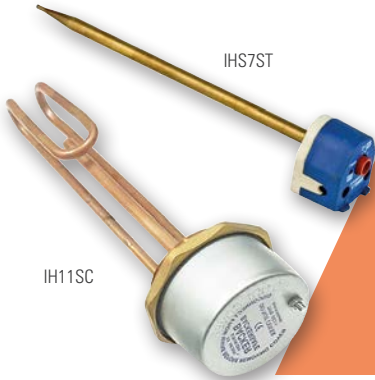
- World's smallest hand dryer with intelligent start operation
- Stainless steel 304 panel construction (thickness of 1.5mm)
- Up to 85% more energy efficient than conventional hand dryer
- Air speed: 65(m/s) / Noise Level: 72dB
- Automatic operation with 10-15 secs (drying time)
- IP20

| |
|-----------|
| 1200W |
| 240v/50Hz |
| G.W.:n/a |

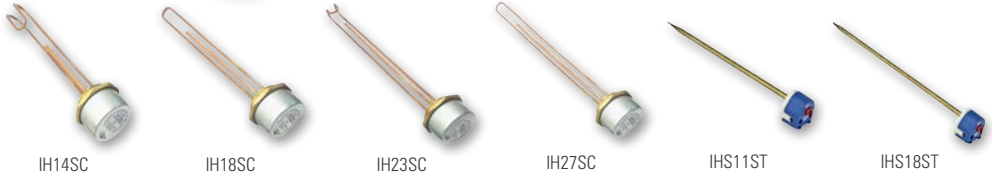
Minimum / Box quantity: 1
Minimum order quantity: 1

CONTROL

Immersion Heaters for Water Supply Systems



- New Range with safety cut-out
- Output: - 3kW 15Amp
- Voltage: - 240v - 50Hz
- Immersion heater made from standard copper alloy
- Sizes:- 11", 14", 18", 23", 27", 30" & 36"
- The new thermostats have a second set of contacts which opens and limits the water temperature to 98 deg centigrade should the primary thermostats fail
- The second cut out is non self resetting
- Stats:- BS EN60730-2 - 7", 11", 18" 15Amp 250v (suitable for top or side entry)
- Stat with pre-set level 60°
- 21/4" Standard threaded head
- BS EN60335-2 approved



Immersion Heaters

| Code | Description | Wattage | Stats Size | Origin | Min/Qty |
|--------|--------------------------|---------|------------|--------|---------|
| IH11SC | Immersion Heater 11 Inch | 3kW | 7" | UK | 1/10 |
| IH14SC | Immersion Heater 14 Inch | 3kW | 7" | UK | 1/10 |
| IH18SC | Immersion Heater 18 Inch | 3kW | 11" | UK | 1/10 |
| IH23SC | Immersion Heater 23 Inch | 3kW | 11" | UK | 1/10 |
| IH27SC | Immersion Heater 27 Inch | 3kW | 18" | UK | 1/10 |

Immersion Heater Thermostats

| Code | Description | Wattage | Stats Size | Origin | Min/Qty |
|---------|-------------------------------|----------|----------------|--------|---------|
| IHS7ST | Immersion Heater Stat 7 Inch | 250v 15A | top/side entry | UK | 1/25 |
| IHS11ST | Immersion Heater Stat 11 Inch | 250v 15A | top/side entry | UK | 1/25 |
| IHS18ST | Immersion Heater Stat 18 Inch | 250v 15A | top/side entry | UK | 1/25 |
| IH30SC | Immersion Heater 30 Inch | 240v 15A | - | - | 1/10 |
| IH36SC | Immersion Heater 36 Inch | 240v 15A | - | - | 1/10 |

Cylinder & Room Thermostats

| Code | Description | Stats Size | Origin | Min/Qty |
|-------|--|------------|--------|---------|
| CTS | Cylinder Thermostat 3Amp 3 - 80°C 240v | | | 1/20 |
| RTS | Room Thermostat 16Amp 3 - 60°C 240v | | | 1/100 |
| RTSFT | Frost Thermostat - 10°C To 20°C 16Amp 250v | | | 1/20 |

Tools

| | | | | |
|-------|-------------------------------|--|--|---|
| TLISF | Immersion Heater Spanner Flat | | | 1 |
|-------|-------------------------------|--|--|---|





CED
ELECTRICAL
GROUP

44-48 FRESHWATER ROAD,
DAGENHAM, ESSEX RM8 1RX (UK)

020 8503 8500

020 8503 8900

www.cedelectrical.co.uk

sales@cedelectrical.co.uk